



AM.2.UP... MODULAR PILOT OPERATED CHECK VALVES CETOP 2

brevini

AM.2.UP type modular check valves allow one way free flow by raising a conical shutter, while in the opposite direction the fluid can return by means of a small piston piloted by the pressure in the other line.

They are available on single A or B lines, and on double A and B lines (see hydraulic symbols).

Max. operating pressure	250 bar
Minimum opening pressure spring 1	1 bar
Minimum opening pressure spring 5	5 bar
Piloting ratio:	1:4
Max. flow	20 l/min
Hydraulic fluids	Mineral oils DIN 51524
Fluid viscosity	10 ÷ 500 mm ² /s a 50°C
Fluid temperature	-20°C ÷ 75°C
Max. contamination level	class 10 in accordance with NAS 1638 with filter $\beta_{25} \geq 75$
Weight	0,5 Kg

AM.2.UP...

SCREWS AND STUDS

CH. IV PAGE 6

ORDERING CODE

AM

Modular valve

2

CETOP 2/NG4

UP

Piloted check valve

Control on lines **A / B / AB**

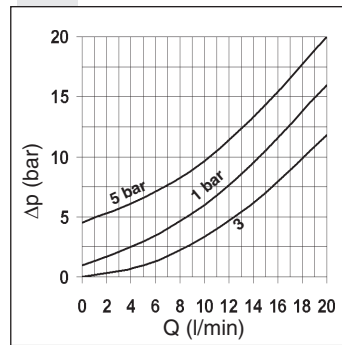
Minimum opening pressure
1 = 1 bar
5 = 5 bar

00 = No variant
V1 = Viton

1

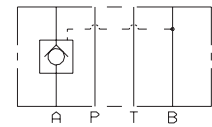
Serial No.

PRESSURE DROPS

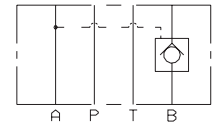


Curve n. 3 = Piloted side flow

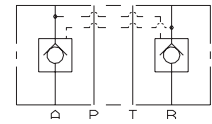
HYDRAULIC SYMBOLS



AM.2.UP.A

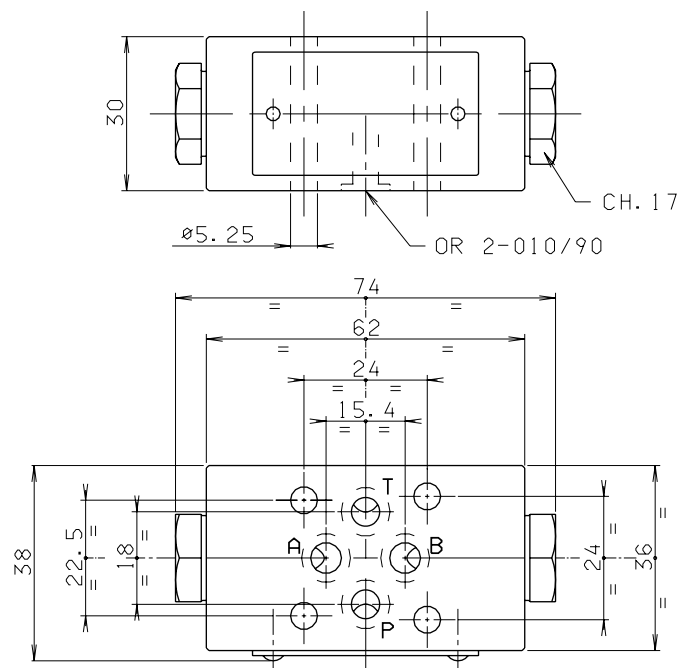


AM.2.UP.B

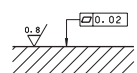


AM.2.UP.AB

OVERALL DIMENSIONS



Support plane specifications



4