

# PH 261-1 HB

The manual band sawing machine ideal for the cut of tubes and metal profiles that combines simplicity with high performance and can work with or without operator



□ **MANUAL SAW**

□ **BAND BLADE**

□ **FOR +60° CUTTING**

- The HB device allows to perform single cuts without operator intervention by using the operating head weight controlled by an hydraulic circuit and valve.

- The HB device can be provided as a KIT to install in already manufactured machines.

- HB device is available only in three-phase version.

## CUTTING RANGE

	○	□	▭
0° / mm	225	200	240 x 160
+45° / mm	160	140	155 x 115
+60° / mm	90	90	90 x 90

Max. open vice 245 mm

## PERFORMANCE CHARACTERISTICS

Blade size	2450 x 27 x 0.9 mm
Blade speed	46 - 92 m/min
Blade motor	0.70 / 0.81 Kw

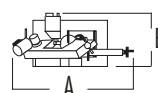
Capacity of coolant tank 15 L

Total input power 1.3 Kw

## WEIGHT AND DIMENSIONS

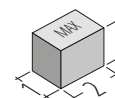
Height of working table 950 mm

Weight 240 kg



A = 1725 mm

B = 715 mm



1 = 800 mm

2 = 1400 mm

3 = 1650 mm